



Polk HealthCare Plan

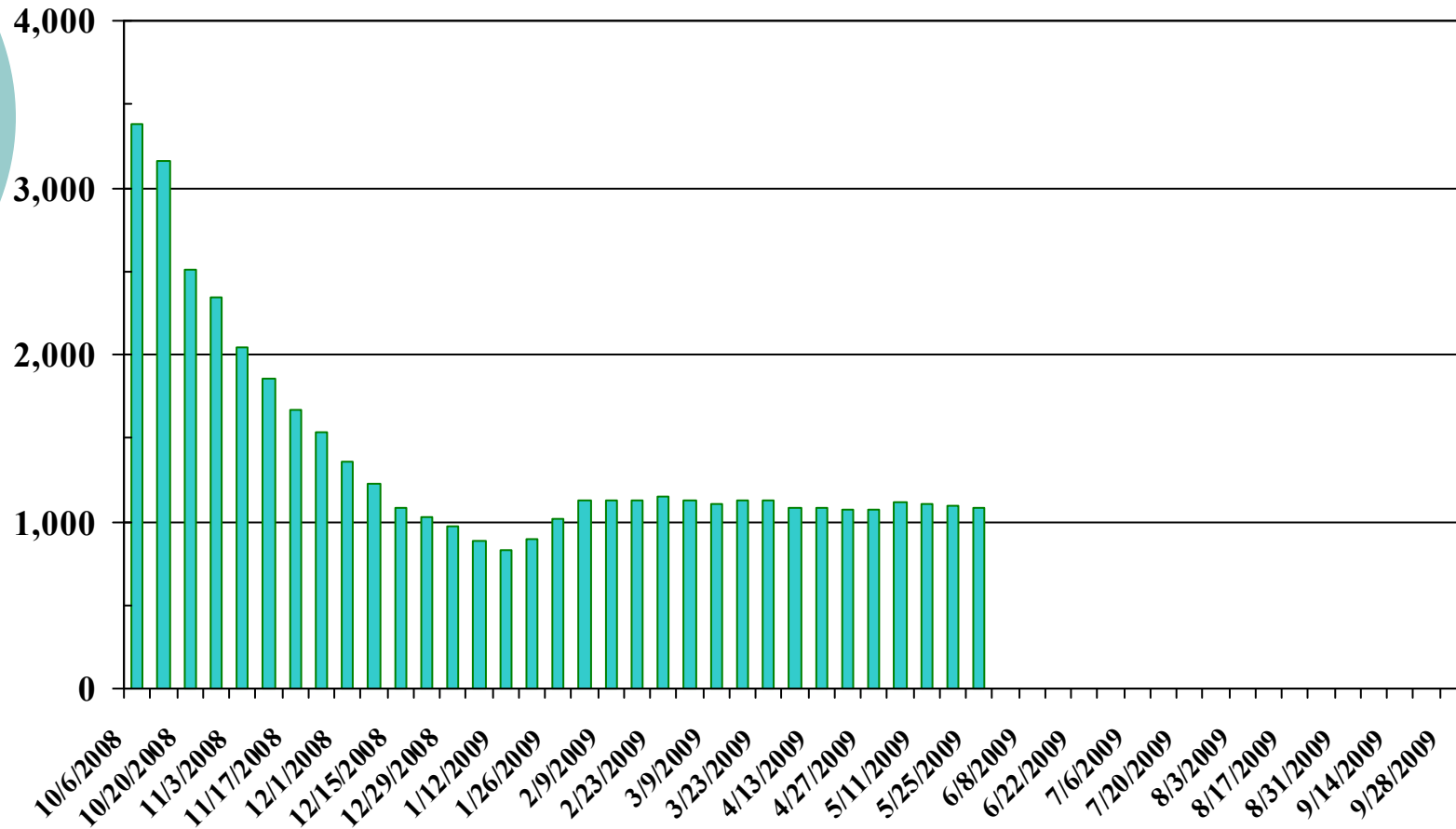
Financial and Statistical Report

Presented by Michael S. Kushner
Risk Management Division Director

June 19, 2009

Polk Healthcare Plan

Average Daily Enrollment (FY2009)
2008-2009 Fiscal Year



Polk HealthCare Plan

Enrollment by Age
As of May 31, 2009

AGE	ENROLLEES	%	AGE	ENROLLEES	%
0 – 17	2	0.2%	46 – 50	228	20.0%
18 – 25	59	5.2%	51 – 55	235	20.6%
26 – 35	74	6.5%	56 – 60	200	17.6%
36 – 40	61	5.4%	61 – 65	138	12.1%
41 – 45	137	12.0%	66+	5	0.4%
TOTAL				1,139	100%

Polk HealthCare Plan

Enrollment by Gender

As of May 31, 2009

MALE	414	36.3%
FEMALE	725	63.7%
TOTAL	1,139	100%

Polk HealthCare Plan

Enrollment by Ethnicity

As of May 31, 2009

Caucasian	678	59.5%
African American	255	22.4%
Hispanic	198	17.4%
Other	8	0.7%
TOTAL	1,139	100%

Polk HealthCare Plan

Enrollment by Location
As of May 31, 2009

Lakeland	319	28.0%	Polk City	15	1.3%	Babson Park	2	0.2%
Winter Haven	247	21.7%	Fort Meade	14	1.2%	Highland City	2	0.2%
Haines City	109	9.5%	Kissimmee	14	1.2%	Lake Hamilton	2	0.2%
Auburndale	94	8.3%	Eagle Lake	11	1.0%	Indian Lake Estates	1	0.1%
Bartow	92	8.0%	Dundee	9	0.8%	Kathleen	1	0.1%
Lake Wales	63	5.5%	Bradley	5	0.4%	Waverly	1	0.1%
Davenport	59	5.1%	Fed Haven	4	0.4%	Alturas	0	0.0%
Mulberry	28	2.5%	Homeland	4	0.4%	Bowling Green	0	0.0%
Frostproof	21	1.8%	Eaton Park	3	0.3%	Nichols	0	0.0%
Lake Alfred	16	1.4%	Loughman	3	0.3%	TOTAL	1,139	100%

Polk HealthCare Plan

Medical Claims Per Enrollee Per Month 2008 – 2009 Fiscal Year

Month/Year	Avg. Daily Enrollment	Medical Claims	Medical PEPM	Medical Rolling	
				PEPM (2 mo. Lag)	Trend
2008-05	12,105	\$3,942,072	\$325.65	\$307.27	32%
2008-06	11,480	\$3,317,511	\$288.97	\$307.54	30%
2008-07	10,602	\$3,166,477	\$298.67	\$301.62	23%
2008-08	9,183	\$3,604,156	\$392.48	\$299.88	18%
2008-09	5,320	\$2,932,757	\$551.27	\$288.05	10%
TOTAL FY08	134,998	\$41,539,663	\$307.70		
2008-10	2,887	\$1,854,735	\$642.44	\$266.96	(4%)
2008-11	1,768	\$864,480	\$488.96	\$254.98	(10%)
2008-12	1,135	\$688,929	\$606.99	\$253.55	(11%)
2009-01	941	\$294,847	\$313.33	\$271.40	(7%)
2009-02	1,139	\$355,878	\$312.45	\$260.29	(13%)
2009-03	1,113	\$403,840	\$362.84	\$260.77	(14%)
2009-04	1,079	\$370,482	\$343.36	\$265.77	(12%)
2009-05	1,094	\$258,862	\$236.62	\$257.97	(16%)
TOTAL YTD FY09	11,156	\$5,092,053	\$456.44		7

Polk HealthCare Plan

Rx Claims Per Enrollee Per Month
2008 – 2009 Fiscal Year

Month/Year	Avg. Daily Enrollment	Rx Claims	Rx PEPM	Rx Rolling	
				PEPM (2 mo. Lag)	Trend
2008-05	12,105	\$951,138	\$78.57	\$71.72	38%
2008-06	11,480	\$902,131	\$78.58	\$72.97	36%
2008-07	10,602	\$869,590	\$82.02	\$73.13	29%
2008-08	9,183	\$814,621	\$88.71	\$73.20	25%
2008-09	5,320	\$612,141	\$115.06	\$72.87	22%
TOTAL YTD	134,998	\$10,444,083	\$77.36		
2008-10	2,887	\$266,646	\$92.36	\$69.98	16%
2008-11	1,768	\$151,855	\$85.89	\$68.56	11%
2008-12	1,135	\$120,752	\$106.39	\$67.96	7%
2009-01	941	\$123,023	\$130.74	\$72.76	11%
2009-02	1,139	\$110,036	\$96.61	\$64.89	(4%)
2009-03	1,113	\$99,309	\$89.23	\$63.65	(8%)
2009-04	1,079	\$94,957	\$88.00	\$62.39	(12%)
2009-05	1,094	\$91,910	\$84.01	\$60.63	(15%)
TOTAL YTD FY09	11,156	\$1,058,487	\$94.88		

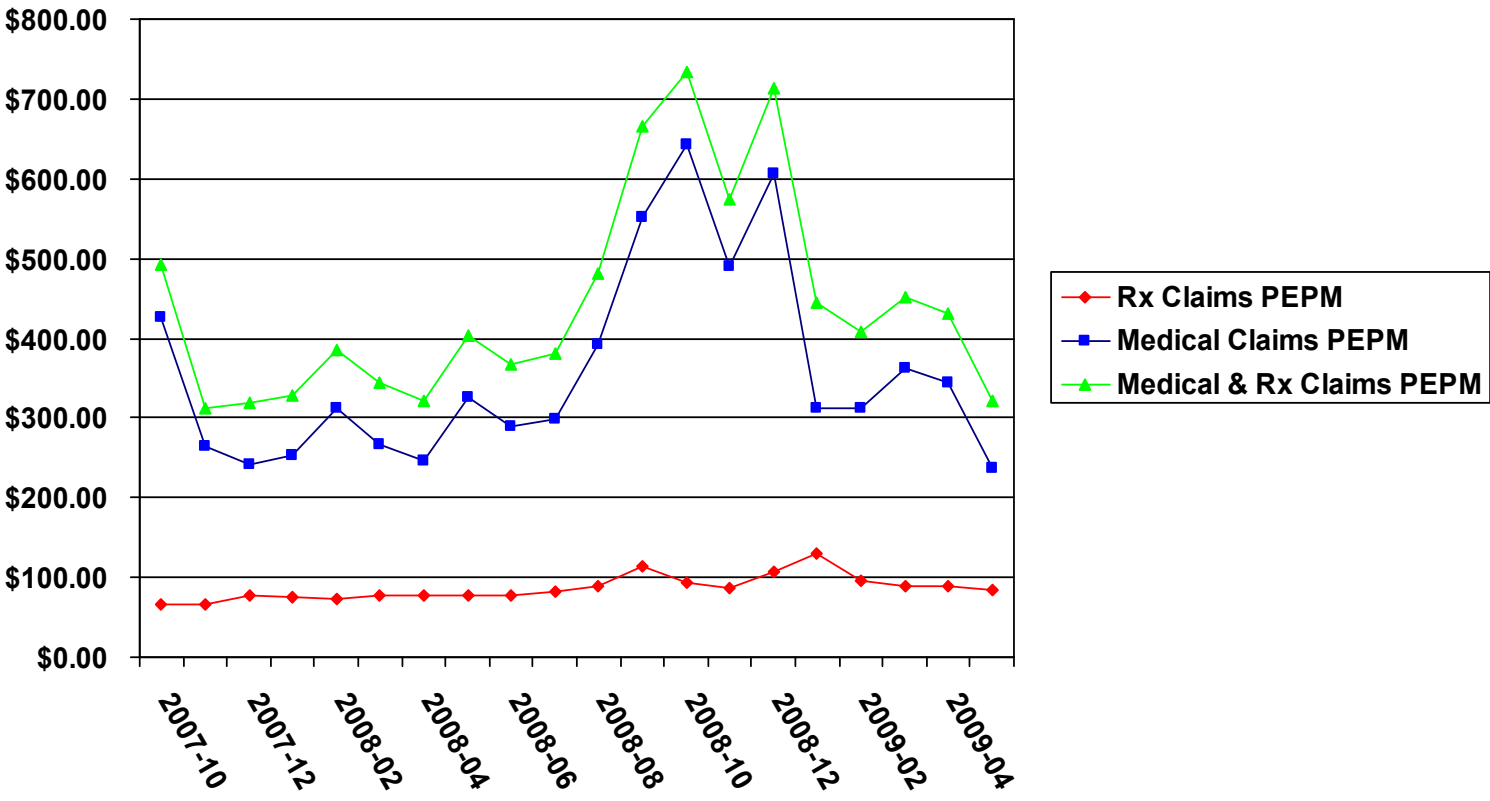
Polk HealthCare Plan

Total Claims Per Enrollee Per Month
2008 – 2009 Fiscal Year

Month/Year	Avg. Daily Enrollment	Total Claims	Total PEPM	Total Rolling	
				PEPM	Trend
2008-05	12,105	\$4,893,210	\$404.22	\$378.99	33%
2008-06	11,480	\$4,219,642	\$367.56	\$367.56	31%
2008-07	10,602	\$4,036,066	\$380.69	\$374.75	24%
2008-08	9,183	\$4,418,777	\$481.19	\$373.08	20%
2008-09	5,320	\$3,544,898	\$666.33	\$360.92	13%
TOTAL YTD	134,998	\$51,983,746	\$385.07		
2008-10	2,887	\$2,121,381	\$734.80	\$336.94	(1%)
2008-11	1,768	\$1,016,335	\$574.85	\$323.54	(6%)
2008-12	1,135	\$809,681	\$713.38	\$321.51	(8%)
2009-01	941	\$417,870	\$444.07	\$344.16	(4%)
2009-02	1,139	\$465,914	\$409.05	\$325.17	(12%)
2009-03	1,113	\$503,149	\$452.07	\$324.42	(13%)
2009-04	1,079	\$465,439	\$431.36	\$328.16	(12%)
2009-05	1,094	\$350,772	\$320.63	\$318.60	(16%)
TOTAL YTD	11,156	\$6,150,541	\$551.32		9

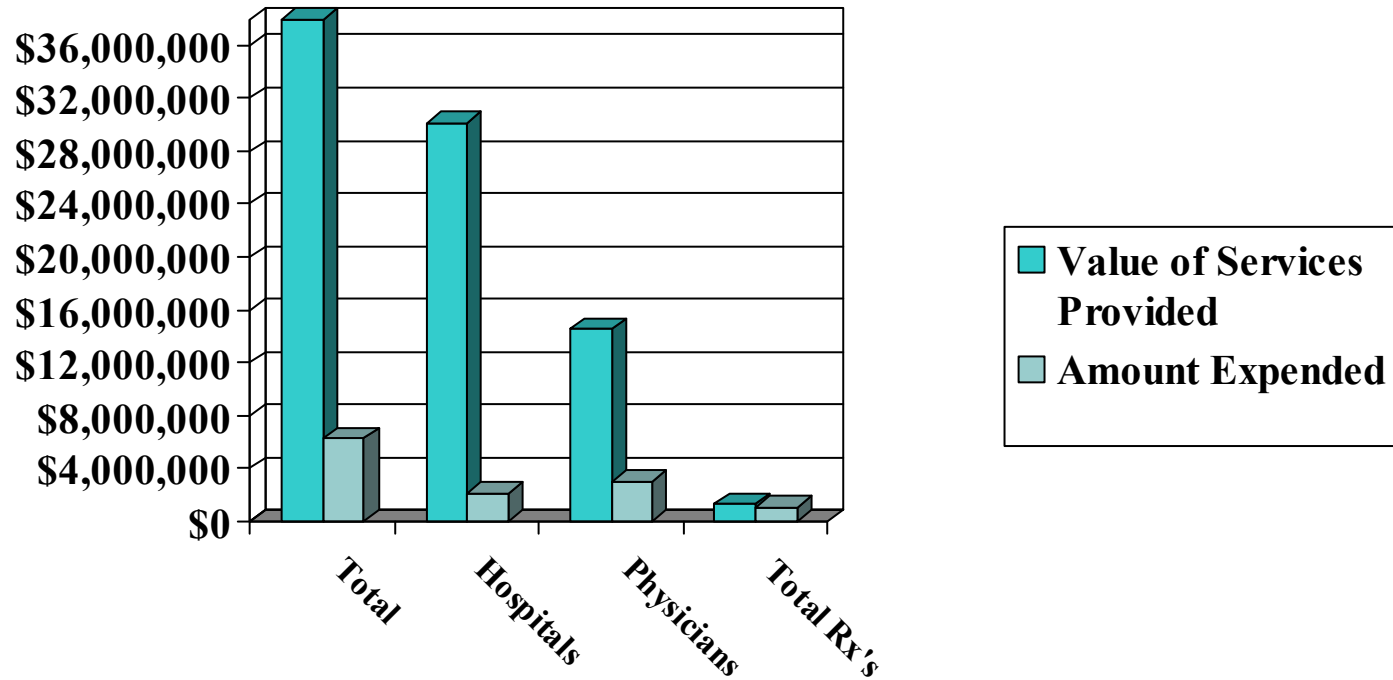
Polk HealthCare Plan

Per Enrollee Per Month
2008 – 2009 Fiscal Year



Polk HealthCare Plan

Value of Services Provided vs. Amount Expended
October 1, 2008 – May 31, 2009



	<u>Total</u>	<u>Hospitals</u>	<u>Physicians</u>	<u>Total Rx's</u>
Amount Billed by Provider	\$ 46,028,199	\$ 30,158,121	\$14,539,426	\$ 1,330,652
Amount Paid to Provider	\$ 6,223,941	\$ 2,148,076	\$ 3,017,378	\$ 1,058,487

Polk HealthCare Plan

Projected Fiscal Year End 2008/2009

	Projected
Beginning Fund Balance	(\$12,191,226)
REVENUES:	
Half-Cent Sales Surtax	\$30,426,548
Other Revenues	\$523,467
TOTAL REVENUES	\$30,950,015
TOTAL EXPENDITURES	\$12,476,791
NET REVENUES OVER EXPENDITURES	\$18,473,224
Ending Fund Balance	\$6,281,998

* FY2009 Claims Liability as of March 31, 2009 per Buck Consultants \$799,000



Polk HealthCare Plan

Fund Balance Flow Sheet

Projected for Fiscal Year 2008/2009

Assumptions

- 1,300 Average Daily Enrollment
- \$333 PMPM Medical Costs per Buck Consultants report dated February 12, 2009
- \$111 PMPM Rx Costs per Buck Consultants report dated February 12, 2009
- \$799,000 Claims Liability as of September 30, 2009