

Polk HealthCare Plan Citizens HealthCare Oversight Committee Meeting



***Neil Combee Bldg.
Boardroom
February 27, 2009***

**Administered by:
Risk Management Division
Sponsored by:
*Polk County Board of County Commissioners***



Recommendation:
Polk HealthCare Plan

Medical Director

Mike Kushner, Division Director
Risk Management
February 20, 2009



Medical Director

- Medical Consultant – Hourly Discount - \$150.00 per hour
- Alternative Vendor Selection Form - \$49,500 total of (330 hours)
- Rationale for AVS Process
 - The need to begin immediately due to tight timeframes in order to accomplish our goals of developing medical policy for the plan – AND_
 - Expertise of Michael Yanuck, M.D. with policy recommendation for low-income and indigent populations.



Recommendation

- Scope of Responsibility: Required Duties
 - Will provide recommendations to the Plan regarding benefits plan design. (100-150 hours)
 - Will develop & provide guidance to the Plan regarding service authorizations, hospital pre-certifications, quality/utilization management.
 - Will define recommended criteria for utilization review and pharmacy activities. (80 to 120 hours)
 - Will provide recommendations to define quality of care benchmarks, develop targeted case management strategies for chronically ill, and identify quality health indicator outcome measures. (20-30 hours)



Recommendation

- Scope of Responsibility: Required Duties
 - Will provide final decision making on denials. (50 to 70 hours)
 - Will serve as the Chairperson of the Utilization Management and Pharmacy & Therapeutics Committee. (40 to 70 hours)
 - Will attend COC & BoCC meetings as necessary. (20 to 40 hours)
 - Identification and prioritization of abnormal utilization patterns & fraud (20 to 40 hours)

Polk HealthCare Plan

Average Daily Enrollment by Class

Class		12/3	12/1 0	12/1 7	12/2 4	12/3 1	01/7	01/1 4	01/2 1	01/2 8	02/0 4	02/1 1	02/1 8
A	100% FPL	1,317	1,183	1,070	1,018	945	878	839	935	1,110	1,134	1,141	1,139
B	125% FPL	2	1	1	1	1	1	1	1	1			
C	150% FPL												
D	175% FPL												
E	200% FPL												
TOTAL		1,319	1,184	1,071	1,019	946	879	840	936	1,111	1,134	1,141	1,139

Polk HealthCare Plan
 Enrollment by Age
 As of January 31, 2009

AGE	ENROLLEES	%	AGE	ENROLLEES	%
0 – 17	6	0.5%	46 – 50	223	19.6%
18 – 25	76	6.7%	51 – 55	202	17.8%
26 – 35	74	6.5%	56 – 60	200	17.6%
36 – 40	57	5.0%	61 – 65	162	14.3%
41 – 45	125	11.0%	66+	11	1.0%
TOTAL				1,136	100%



Polk HealthCare Plan
Enrollment by Gender
As of January 31, 2009

MALE	411	36.2%
FEMALE	725	63.8%
TOTAL	1,136	100%



Polk HealthCare Plan
Enrollment by Ethnicity
As of January 31, 2009

Caucasian	660	58.1%
African American	240	21.1%
Hispanic	224	19.7%
Other	12	1.1%
TOTAL	1,136	100%

Polk HealthCare Plan Enrollment by Location As of January 31, 2009

Alturas	0	0.0 %	Fedhaven	4	0.4%	Lake Hamilton	4	0.4%
Auburndale	88	7.7 %	Fort Meade	14	1.2%	Lake Wales	63	5.5%
Babson Park	4	0.4 %	Frostproof	23	2.0%	Lakeland	331	29.1%
Bartow	102	9.0 %	Haines City	97	8.5%	Loughman	2	0.2%
Bowling Green	0	0.0 %	Highland City	0	0.0%	Mulberry	35	3.1%
Bradley	5	0.4 %	Homeland	3	0.3%	Nichols	0	0.0%
Davenport	72	6.3 %	Indian Lakes Estates	0	0.0%	Polk City	16	1.4%
Dundee	10	0.9 %	Kathleen	0	0.0%	Waverly	4	0.4%
Eagle Lake	8	0.7 %	Kissimmee	16	1.4%	Winter Haven	216	19.0%
Eaton Park	2	0.2 %	Lake Alfred	17	1.5%	TOTAL	1,136	100%

Polk HealthCare Plan

Medical Claims Per Enrollee Per Month

2008 – 2009 Fiscal Year

Month/Year	Avg. Daily Enrollment	Medical Claims	Medical PEPM	Medical Rolling	
				PEPM (3 mo. Lag)	Trend
2008-01	12,846	\$3,238,734	\$252.13	\$292.41	32%
2008-02	13,082	\$4,087,894	\$312.49	\$299.80	35%
2008-03	12,910	\$3,457,129	\$267.78	\$303.10	33%
2008-04	12,539	\$3,074,239	\$245.17	\$302.48	32%
2008-05	12,105	\$3,942,072	\$325.65	\$307.27	32%
2008-06	11,480	\$3,317,511	\$288.97	\$307.54	30%
2008-07	10,602	\$3,166,477	\$298.67	\$301.62	23%
2008-08	9,183	\$3,604,156	\$392.48	\$299.88	18%
2008-09	5,320	\$2,932,757	\$551.27	\$288.05	10%
TOTAL FY08	134,998	\$41,539,663	\$307.70		
2008-10	2,887	\$1,854,735	\$642.44	\$266.92	(4%)
2008-11	1,768	\$864,480	\$488.96	\$254.98	(10%)
2008-12	1,135	\$688,929	\$606.99	\$253.55	(11%)
2009-01	941	\$294,847	\$313.33	\$271.40*	(7%)
TOTAL YTD FY09	6,731	\$3,702,991	\$550.14		

• 2 Month lag beginning in 2009-01

Polk HealthCare Plan

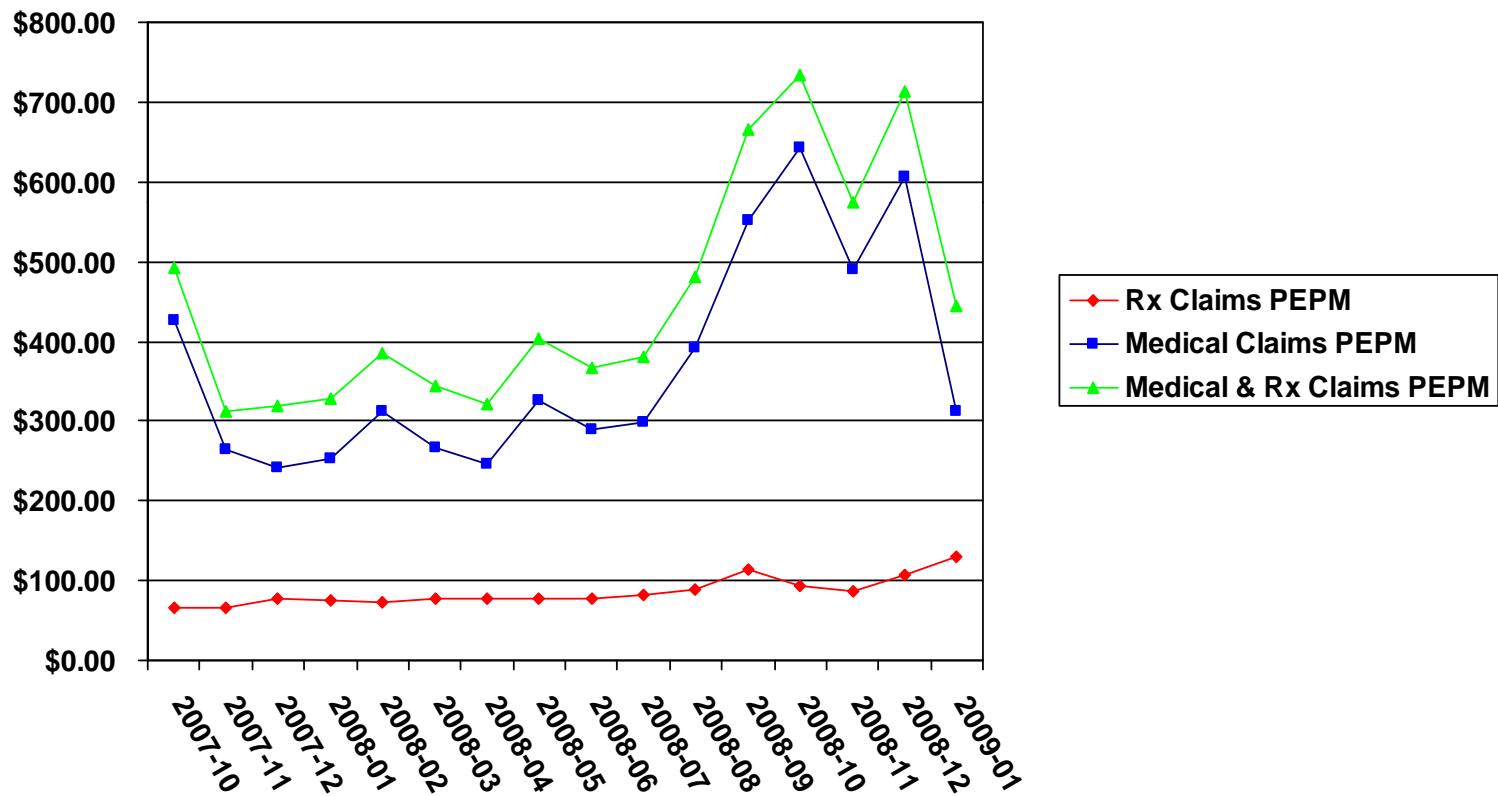
Rx Claims Per Enrollee Per Month

2008 – 2009 Fiscal Year

Month/Year	Avg. Daily Enrollment	Rx Claims	Rx PEPM	Rx Rolling	
				PEPM (2 mo. Lag)	Trend
2008-01	12,846	\$970,689	\$75.57	\$65.45	43%
2008-02	13,082	\$943,057	\$72.09	\$67.79	43%
2008-03	12,910	\$988,268	\$76.55	\$69.24	41%
2008-04	12,539	\$958,636	\$76.45	\$70.61	40%
2008-05	12,105	\$951,138	\$78.57	\$71.72	38%
2008-06	11,480	\$902,131	\$78.58	\$72.97	36%
2008-07	10,602	\$869,590	\$82.02	\$73.13	29%
2008-08	9,183	\$814,621	\$88.71	\$73.20	25%
2008-09	5,320	\$612,141	\$115.06	\$72.87	22%
TOTAL YTD	134,998	\$10,444,083	\$77.36		
2008-10	2,887	\$266,646	\$92.36	\$69.98	16%
2008-11	1,768	\$151,855	\$85.89	\$68.56	11%
2008-12	1,135	\$120,752	\$106.39	\$67.96	7%
2009-01	941	\$123,023	\$130.74	\$72.76*	11%
TOTAL YTD FY09	6,731	\$662,276	\$98.39		

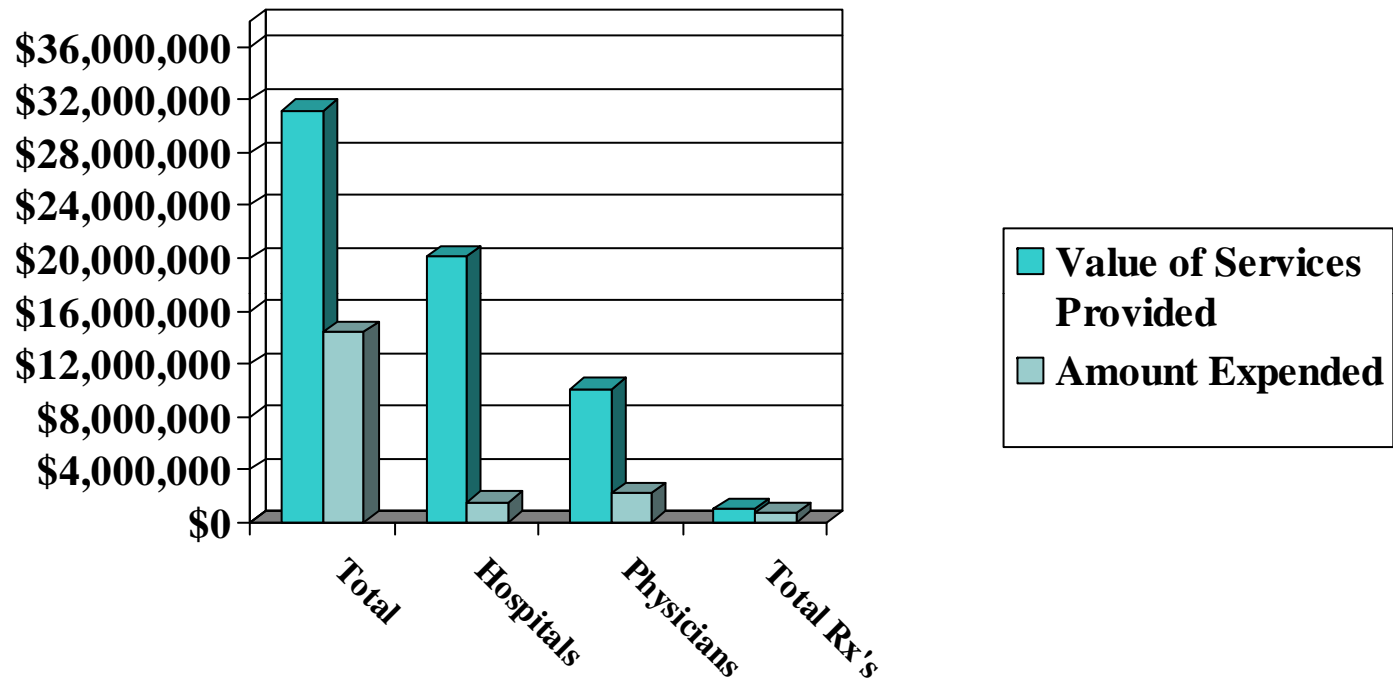
• 1 Month lag beginning in 2009-01

Polk HealthCare Plan Per Enrollee Per Month 2007 – 2008 Fiscal Year



Polk HealthCare Plan

Value of Services Provided vs. Amount Expended October 1, 2008 – January 31, 2009




	<u>Total</u>	<u>Hospitals</u>	<u>Physicians</u>	<u>Total Rx's</u>
Amount Billed by Provider	\$ 31,225,716	\$ 20,095,564	\$10,097,538	\$ 1,032,614
Amount Paid to Provider	\$ 14,365,282	\$ 1,542,356	\$ 2,160,650	\$ 662,276

Polk HealthCare Plan
 Projected Year End FY 2008/2009

	Actual
Beginning Fund Balance	(\$12,191,268)
REVENUES:	
Half-Cent Sales Surtax	\$30,823,219
Other Revenues	\$625,732
TOTAL REVENUES	\$31,448,951
TOTAL EXPENDITURES	\$13,042,172
NET REVENUES OVER EXPENDITURES	\$18,406,779
Ending Fund Balance	\$6,215,511

* FY2009 Claims Liability as of December 31, 2008 per Buck Consultants \$1,434,000



Polk HealthCare Plan
Fund Balance Flow Sheet
Projected for Fiscal Year 2008/2009
Assumptions

- 1,300 Average Daily Enrollment
- \$333 PMPM Medical Costs per Buck Consultants report dated February 12, 2009
- \$111 PMPM Rx Costs per Buck Consultants report dated February 12, 2009
- \$1,500,000 Claims Liability as of September 30, 2009